

First woman leads Japanese Antarctic Research Expedition team

On 18 March the Japanese icebreaker *JS Shirase* arrived in Sydney on its return from Antarctica. Two days later, a reception was held on board attended by more than 350 guests.

Consul-General Takewaka, Captain Koji Miyazaki of the *JS Shirase*, and Captain Stephen Bowater of the Royal Australian Navy gave speeches before a *kagami-biraki* sake barrel opening ceremony to celebrate friendship and prosperity between Japan and Australia. Dr Naomi Harada, Deputy Leader of the 60th Japan Antarctic Research Expedition (JARE) proposed the toast.

The *Shirase* was on its annual return from Antarctica carrying on board members of the 60th JARE. Leading the summer JARE team home to Japan is Dr Naomi Harada, the first woman to hold the position. When Dr Harada went on the 33rd JARE, she was the only female member. Today she is one of fourteen women, a number she hopes to help increase in the future*.



* "For the first time, woman to lead Japanese team in Antarctica" Y. Nakayama, www.asahi.com/ajw/articles/AJ201811070058.html, accessed 19/03/2019

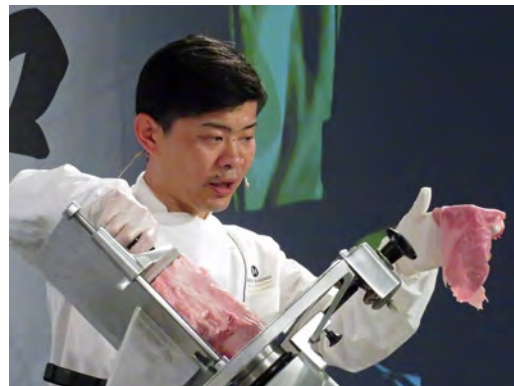
Consul-General's activities

The start of 2019 proved the Consul-General Takewaka's frequent observation that Japan-Australia relations are developing in every aspect, not only political and economic, and this could be seen in the variety of events he was involved in.

Ties between the youth of Japan and Australia form one of the keys to the ongoing strength of our two countries ties. On 14 February, Consul-General Takewaka visited Western Sydney University (WSU) and spoke about Japan-Australia relations with the WSU students as well as students from Meiji University who are staying at WSU on a short-stay program as part of a mutual short-stay program [image, bottom left].

Japanese people are making significant contributions to Australia's cultural life. On 22 February, Consul-General Takewaka invited Mr Akira Isogawa, one of Australia's most famous fashion designers, and Ms Kumi Taguchi, a broadcaster on ABC, to a dinner at his residence [right]. Also in attendance was Ms Junko Howe, a producer of the Japanese radio program on SBS.

In regards to economic ties, business opportunities continue to be developed. After Japanese beef returned to the Australian market last year, a follow-up event was held in Sydney on 16 January by the Japan Livestock Products Export Promotion Council (JLEC) "Matching Seminar for Professionals of Authentic Japanese Wagyu Beef", which included a cutting demonstration [bottom right]. The Consul-General gave a speech at the event in which he noted the ongoing popularity of Japanese food in Australia and encouraged the seminar participants to use their skills to bring out the wonderful flavours of Japanese Black (beef).



Photos of the Consul-General's visits and Consulate events are regularly uploaded to our website and Facebook.

Facebook: CGJSYD

www.sydney.au.emb-japan.go.jp